

## FIXED FUNCTIONS - HOURS

### THURSDAY, JAN. 6

Registration: 12n-9pm  
Dealers Room: 3pm-7pm  
Art Show: 3pm-8pm  
Hospitality Suite: 4pm-10pm  
Screening (Video) Room: 6pm-2am  
Gaming Room(s): 6pm on...  
Mythos Music Room: 6pm-2am

### FRIDAY, JAN. 7

Registration: 9am-9pm  
Dealers Room: 10am-7pm  
Art Show: 10am-8pm  
Hospitality Suite: 9am-10pm  
Screening (Video) Room: 12n-2am  
Gaming Room(s): open 24 hrs.  
Mythos Music Room: 6pm-1am

### SATURDAY, JAN. 8

Registration: 9am-9pm  
Dealers Room: 12n-7pm  
Art Show: 12n-8pm  
Hospitality Suite: 10am-10pm  
Screening (Video) Room: 9am-2am  
Gaming Room(s): 24 hrs.  
Mythos Music Room: 6pm-1am

### SUNDAY, JAN. 9

Registration: closed  
Dealers Room: 10am-7pm  
Art Show: 10am-8pm  
Hospitality Suite: 9am-10pm  
Screening (Video) Room: 9am-2am  
Gaming Room(s): closes at  
Mythos Music Room: 12n-1am

For your dining pleasure, here is a list of restaurants on Mill Ave, listed south to north

Monti's La Casa Vieja - 100 S Mill Ave  
MoJo Frozen Yogurt - 350 S Mill Ave  
Caffe Boa Bistro and Wine Bar - 398 S Mill Ave  
Rula Bula Irish Pub & Restaurant - 401 S Mill Ave  
The Tavern on Mill - 404 S Mill Ave  
RA Sushi-Bar-Restaurant - 411 S Mill Ave  
Corleone's Authentic Philly Steaks - 411 S Mill Ave  
Fatburger - 414 S Mill Ave  
In Season Deli - 414 S Mill Ave  
Silver Mine Subs - 414 S Mill Ave  
Med Fresh Grill - 414 S Mill Ave  
Stans Metro Deli - 414 S Mill Ave  
Vintage Lounge & Grill - 414 S Mill Ave  
Gordon Biersch Brewery - 420 S Mill Ave  
Starbucks Coffee - 420 S Mill Ave  
Restaurant Mexico - 423 S Mill Ave  
Dunkin' Donuts - 425 S Mill Ave  
Blondies Sports Bar & Grill - 501 S Mill Ave  
Hooters of Tempe - 501 S Mill Ave  
Crave Cafe & Lounge - 505 S Mill Ave  
Sparky's Old Town Creamery - 510 S Mill Ave  
My Big Fat Greek Restaurant - 525 S Mill Ave  
Zuma Grill - 605 S Mill Ave  
Canteen Modern Tequila Bar - 640 S Mill, Ste 110  
Robbie Fox's Public House - 640 S Mill Ave  
Five Guys Burgers & Fries - 680 S Mill Ave  
Fat Tuesday Bar - 680 S Mill Ave  
Jimmy John's Gourmet Sandwiches - 680 S Mill  
Kanpai Sushi & Wine Bar - 690 S Mill Ave  
Dog Town Chili Dogs - 690 S Mill Ave  
La Bocca Urban Pizzeria + Wine Bar - 699 S Mill  
Jack-in-the-Box - 721 S Mill Ave  
Poppa Maize Gourmet Popcorn - 730 S Mill Ave  
P.F. Chang's China Bistro - 740 S Mill Ave  
Sucker Punch Sally's - 4 E University Dr  
Chili's - 801 S Mill Ave



## MYTHOSCON PROGRAM SCHEDULE

### THURSDAY, JAN. 6

2:30p Cloister - Opening Ceremonies  
3:00p Cloister - Those Who Influenced and/or Inspired Lovecraft (Part I)  
4:00p Cloister - Those Who Influenced and/or Inspired Lovecraft (Part II)  
5:00p Cloister - Reading: Robert M. Price  
5:00p Sand Lotus - Reading: Ann K. Schwader  
5:30p Cloister - Reading: Wilum Pugmire  
6:00p Sand Lotus - Reading: Weston Ochse  
6:00p Dolores - Introduction to *Call of Cthulhu*  
6:30p-8p - Supper/Happy Hour Break (1.5 hrs)  
8:00p Palm C-F - Reading: Cody Goodfellow  
8:00p Sand Lotus - Reading: Fred Phillips  
8:30p Palm C-F - Reading: Lois Gresh  
8:30p Sand Lotus - Reading: Richard Gavin  
9:00p Palm C-F - Reading: Ron Hilger  
9:00p Sand Lotus - Reading: Darrell Schweitzer  
9:30p Palm C-F - Reading: Chuck Hoffman  
9:30p Sand Lotus - Reading: Jonathan Thomas  
10:00p Palm C-F - Reading: Simon Strantzas  
10:00p Sand Lotus - Reading: Jenna Pitman

### FRIDAY, JAN. 7

9:00a Palm C-F - Reading: Ramsey Campbell  
10:00a Palm C-F - The Lovecraft Circle (Part I)  
11:00a Palm C-F - The Lovecraft Circle (Part II)  
12:00n-1:00p - Lunch Break (1 hr)  
1:00p Palm C-F - The Old Gentleman, His Life and Death  
2:00p Palm C-F - Lovecraft's Mythos Tales and Novels  
3:00p Palm C-F - Contemporary Mythos Tales

Friday, continued

- 4:00p Palm C-F - Virtual Walking Tour of Providence and Environs
- 4:00p Sand Lotus - Reading: Jason Brock
- 4:30p Sand Lotus - Reading: William F. Nolan
- 5:00p Palm C-F - Virtual Tour of Lovecraft's New England
- 5:00p Sand Lotus - Reading: Peter Cannon
- 5:30p Sand Lotus - Reading: Matt Cardin
- 6:00p-8:00p - Supper/Happy Hour Break (2 hrs)
- 8:00p Palm C-F - *Weird Tales*: Market of Markets
- 8:00p Sand Lotus - Reading: Michael Cisco
- 8:30p Sand Lotus - Reading: Richard Dakan
- 9:00p Palm C-F - Lovecraft's Mythos Creatures
- 10:00p Abbey - Program Participant Reception

SATURDAY, JAN. 8

- 9:00a-11:30a Abbey - The Cthulhu Prayer Breakfast, followed by Prayer Service. **This is a separately ticketed event.**
- 9:00a Palm C-F - It Slumbers Far Below Blue Waters: the Historic & Geographic Reality Behind Lovecraft's 'The Colour Out of Space'
- 12:00n Palm C-F - Small Presses I
- 1:00p Palm C-F - Small Presses II
- 2:00p Palm C-F - The Arkham Collector
- 3:00p Palm C-F - Books of the Mythos
- 4:00p Palm C-F - H. P. Lovecraft on Film
- 5:00p Palm C-F - Poetry of the Lovecraft Circle and Beyond
- 6:00p-8:00p - Happy Hour/Supper Break (2 hrs)
- 8:00p Palm C-F - Scholarship: Setting the Record Straight
- 9:00p Abbey - Mass autographing

SUNDAY, JAN. 9

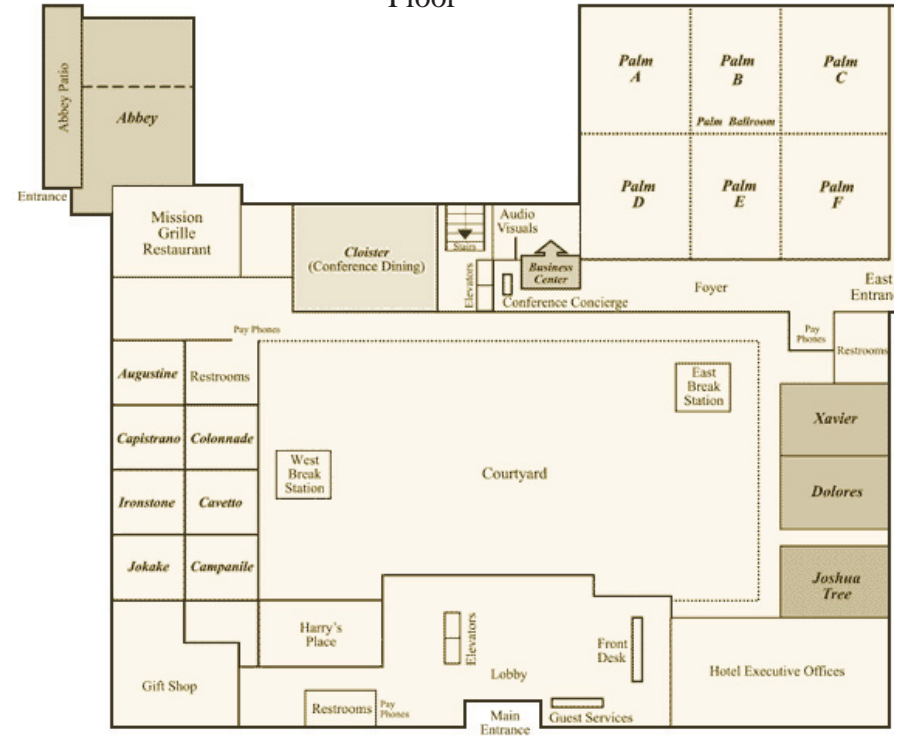
- 9:00a Palm C-F - Contemporary Mythos Writing
- 10:00a Palm C-F - Lovecraft's Letters

Sunday, continued

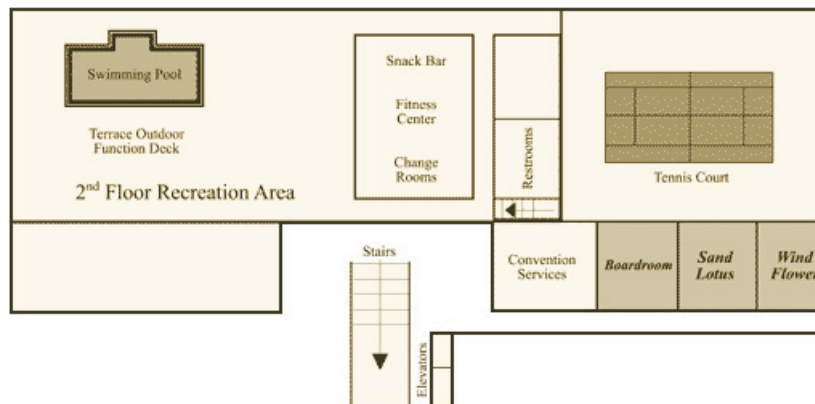
- 11:00p Palm C-F - Chaosium Fiction
- 12:00p-1:00p - Lunch (1 hr)
- 1:00p Palm C-F - HPL's Revisions
- 2:00p Palm C-F - Fantastical Poetry Presentation
- 3:00p Palm C-F - Compliments and Complaints
- 5:00p Hospitality Suite - Dead Dog Party PLUS!

MAPS - TEMPE MISSION PALMS HOTEL

First Floor



Second Floor



Convention Hospitality =  
Room # 2038-39

Staff Lounge =  
Room # 2069-70